

lombardi

CONVERTING MACHINERY

ADVANCED FLEXP SYSTEMS

MADE IN ITALY

MARKETED & SERVICED BY

VINSAK

WWW.VINSAK.COM



lombardi

CONVERTING MACHINERY

ADVANCED FLEXPRESS SYSTEMS

MADE IN ITALY

FINEST PRINTING TECHNOLOGY

Lombardi Converting Machinery is a company based in Italy that operates in the field of printing & converting machinery. Renowned all over the world for its quality and technology. It's involved in the design and construction of modular flexographic printing machines, equipped with standardized automation systems that can be configured based on the specific needs of customers in constant search for solutions ranging from narrow web to mid web.

FLEXIBLE PACKAGING	4
INVICTA i2	4
INVICTA i1	6
LABELS	8
INVICTA i1	8
SYNCHROLINE	10
FLEXOLINE	12
DIGITAL	14
DIGISTAR (FINISHING)	14
ASTRA UNIT (INKJET)	16
ABS	18
SPECIAL PROCESSES	19
CURING SYSTEMS	20
EMBELLISHMENT UNITS	21
DIECUT UNITS	22
UNWINDERS UNITS	23
PRINT UNITS	23





SLEEVE TECHNOLOGY FOR FLEXIBLE PACKAGING



INVICTA i2

HIGH QUALITY FLEXO PACKAGING PRESS

Sizes: 780 | 850 | 1100

INVICTA i2 It's a mid web press developed for printing of high quality flexible packaging. This machine is totally gearless, shaftless and direct drive on the three main elements of the printing unit such as sleeve shaft, anilox shaft and drum shaft. Thanks to this and to a solid frame featuring 50 mm shoulders, this machine delivers unrivaled quality.

Invicta i2 has a maximum development of 36" (914 mm). This press can print any type of filmic material, and aluminum as low as 12 MY. Invicta i2 can print plastic films for roll fed, Shrink and Stretch applications as well as multi substrates, aluminum, light carton. Quick change inking system, thanks to close chambers doctor blade featuring automatic inking and automatic washing.



SLEEVE TECHNOLOGY FOR FLEXIBLE PACKAGING

INVICTA *i1*

FLEXIBLE PACKAGING

Sizes: 450 | 550 | 670

Full servo and gearless flexo machine. It comes with 10 engines for each printing unit and sleeve technology with automatic pre-register and register. It is able to print on every type of workable substrate: BOPP, PVC, PE, PET, paper, adhesive paper, thermal paper, cardboard, paired materials. Invicta is a flexible, dynamic and user-friendly printing machine that minimizes the operator's efforts.



SLEEVE TECHNOLOGY FOR LABELS

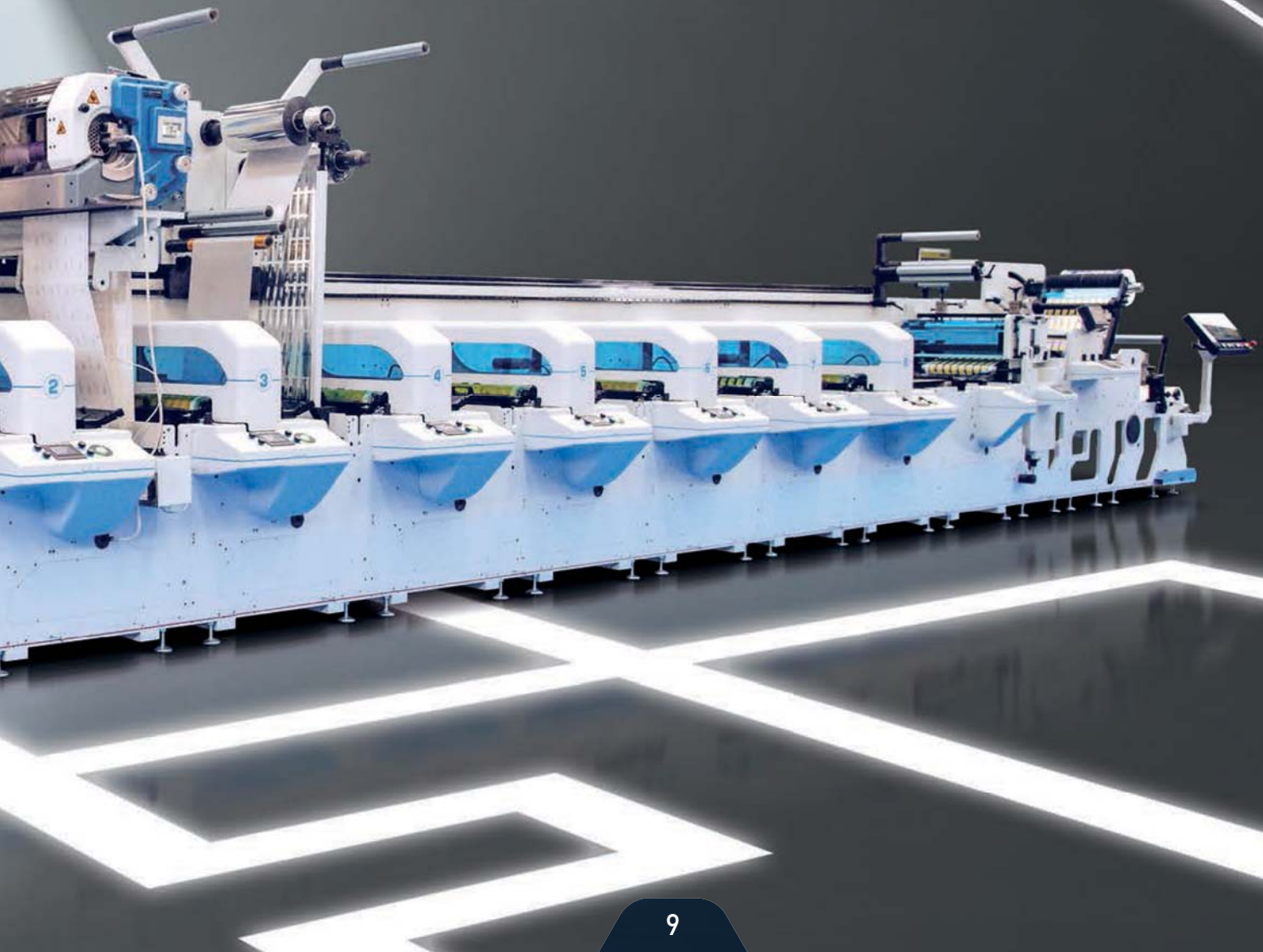


INVICTA *i1*

FOR LABELS

Sizes: 450 | 550

Full servo and gearless flexo machine. It comes with 10 engines for each printing unit and sleeve technology with automatic pre-register and register. It is able to print on every type of workable substrate: BOPP, PVC, PE, PET, paper, adhesive paper, thermal paper, cardboard, paired materials. Invicta is a flexible, dynamic and user-friendly printing machine that minimizes the operator's efforts.



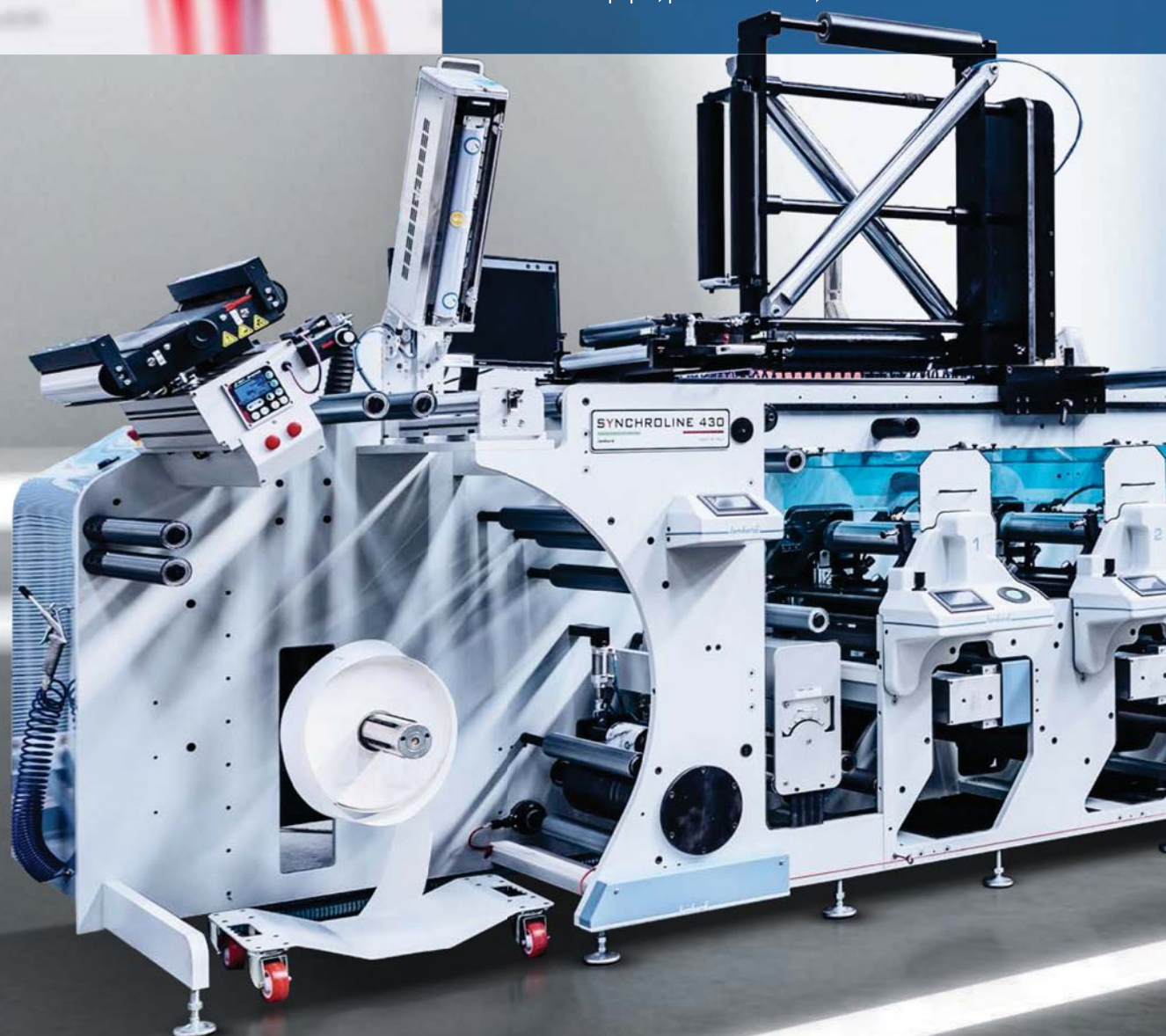


SYNCHROLINE

FULL SERVO, GEARLESS FLEXO PRESS

Sizes: 330 | 430 | 530 | 600

Full servo, with automatic pre-register and register, represents the cutting-edge technology of Lombardi's range of printing machines. Synchroline has been designed to give the best performance in the label, packaging, and printing industry in general on each substrate. The name 'Universal Machine' has been gained because there are no limitations of printable materials: BOPP, PVC, PE, PET, paper, adhesive paper, thermal paper, paired materials, cardboard.



FULL SERVO
FULL AUTOMATIC
FULL MODULAR





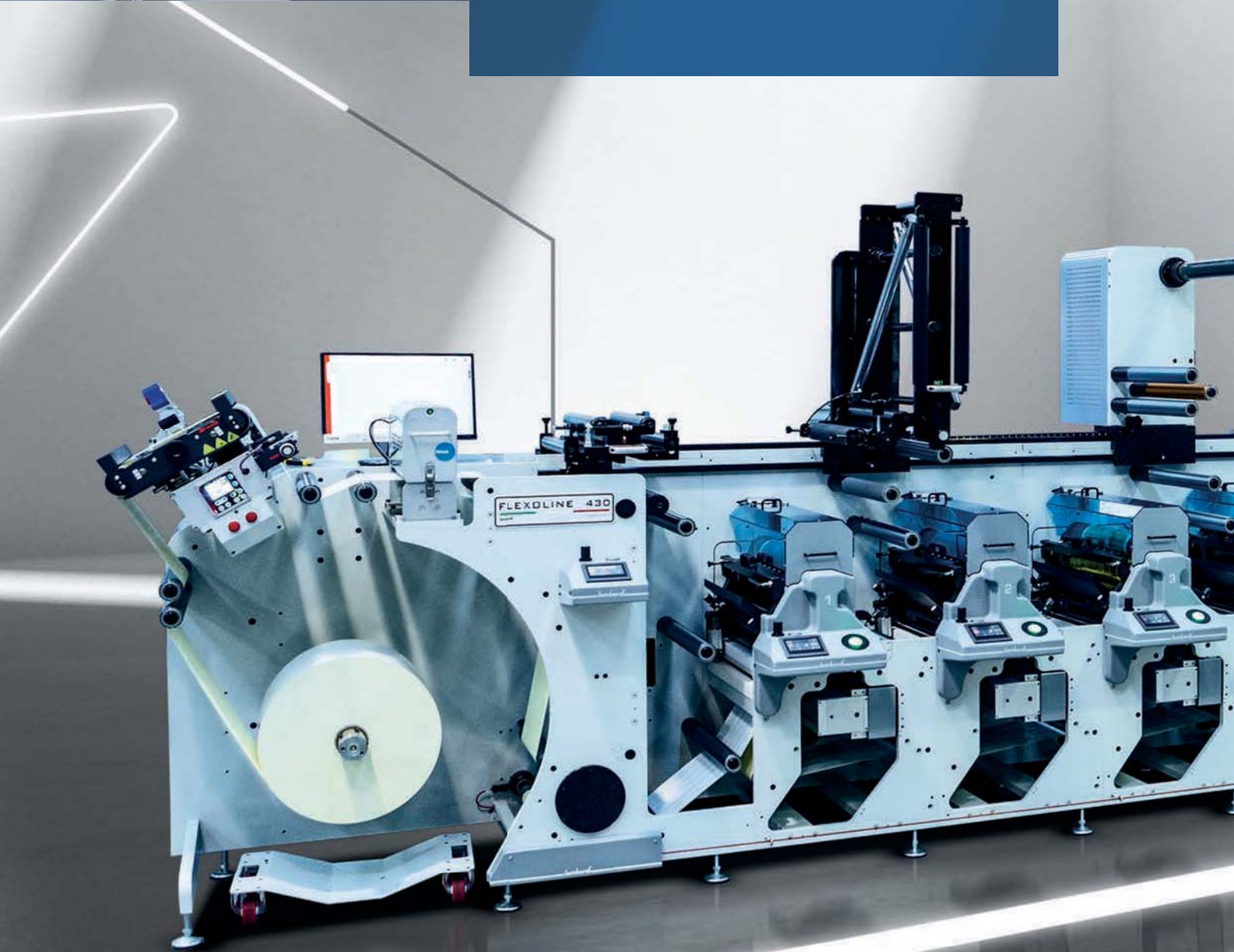
6

FLEXOLINE

THE ENTRY LEVEL FLEXO PRESS

Sizes: 330 | 430

It is the entry level flexo press for the world of labels. Equipped with manual register and electronic tension control of the material, it is able to guarantee the highest quality of the printing as well as quick and easy job changeover for the operator. Flexoline offers advanced technological solutions aimed at ensuring excellent printing register also with high speeds.





ENTRY
LEVEL
TECHNOLOGY



FINISHING PRINTING PRESS

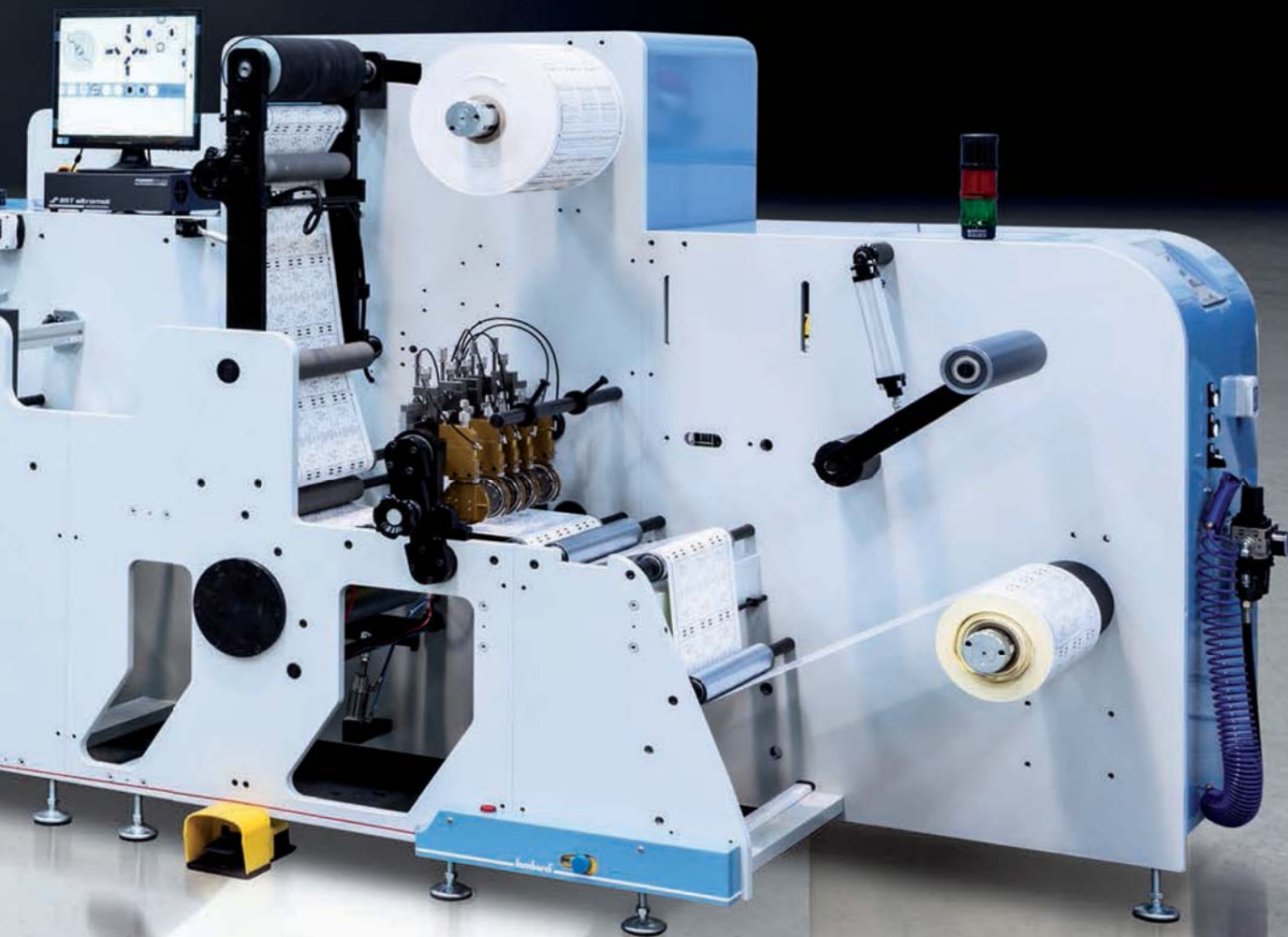


DIGISTAR

FINISHING PRINTING PRESS

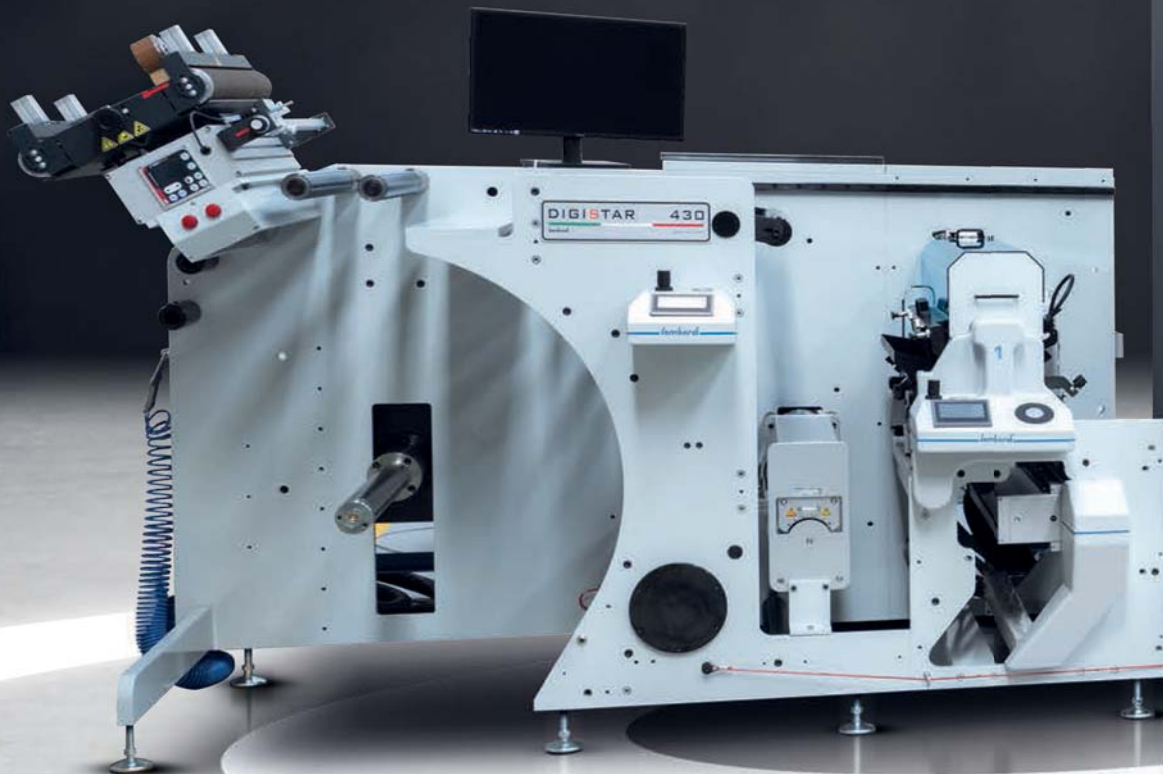
Sizes: 330 | 430 | 530

It can offer high quality finishing especially for digital post press. Digistar is flexible, versatile and highly performing, also available with hot foil, flexo group and semi-rotative die set. This printing machine is totally modular to achieve an unmatched finishing. It integrates perfectly with Lombardi Converting Machinery exclusive modules such as the Toro unit for embossing, hot foiling and hologram inseting and with the Bravo unit for inline screen printing.



Astra

THE
ULTIMATE
INKJET
SOLUTION



ASTRA UNIT

THE HYBRID INKJET SOLUTION

Sizes: 330 | 430 | 530 | 600

The Astra unit represents the latest exclusive innovation in terms of digital printing developed by Lombardi. This inkjet unit can be used standalone or can be combined with the Digistar model to create a hybrid press that can tackle all the challenges of today's printing.



AIR BLADE SYSTEM

ABS

The unit is conceived to reach maximum quality in the blading process dropping dramatically down the job change time, thanks to easy-change system. Thanks to Hi-Dynamix, the new pneumatical – based locking concept, the A.B.S. Unit produces an auto- fitting dynamic pressure on the anilox roller, resulting in the highest quality of ink distribution. All the usual mechanical regulations of the blade, disappear.

The blade is auto-fitted to the desired pressure over the anilox, gaining:
Perfect blade parallelism on anilox, reached automatically.
Auto adaptive system even when the blade is consumed during the process.
Longer anilox life, thanks to perfect pressure.
Maximum homogeneity in ink distribution, resulting in the highest printing quality.



SPECIAL PROCESSES

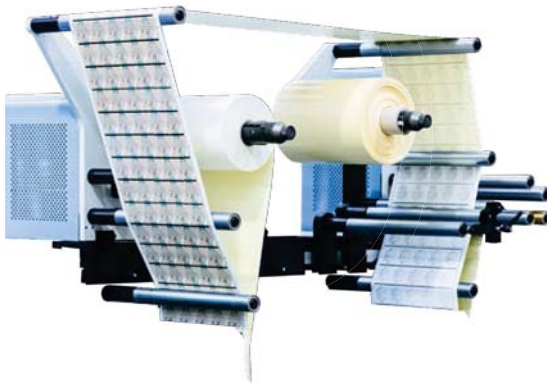


DELAM RELAM

Unit that allows the separation of adhesive paper from the silicone so that it's printed on the glue side and then re-coupled.

TURN BAR

Unit that allows printing on the back of the media.

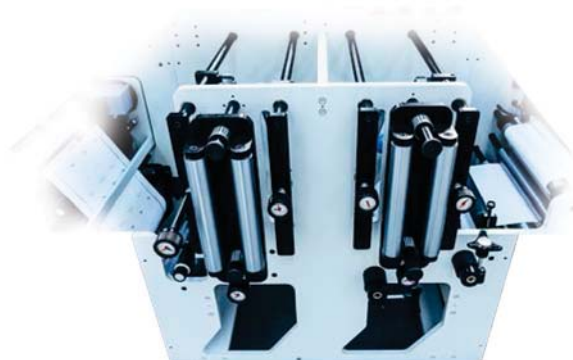


BOOKLET

Needed for the creation of multi-page labels, the booklet unit guarantees a perfect register and high production.

OVERLAP

Multi-layers labels unit.



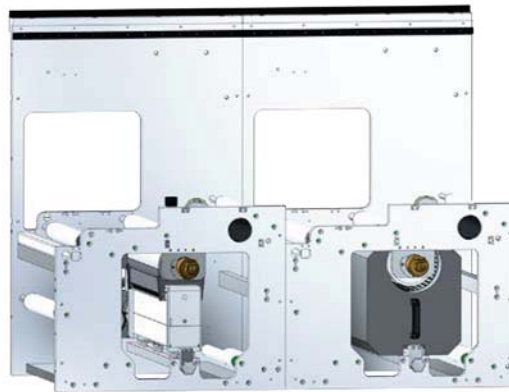
CURING SYSTEMS

DRYING OPTIONS:

- UV MERCURY
- UV LED
- ELECTRON BEAM
- HOT AIR DRYERS
FOR WATER BASED INK
- HOT AIR DRYERS
FOR SOLVENT-BASED INK

EXTENDED HOT AIR DRYER

It's around the chill drum,
interchangeable with UV unit.



SUPER EXTENDED AIR DRYER

Water based or solvent based inks
solution.

A-FRAME AIR DRYER

High speed for high coverage solution.



EMBELLISHMENT UNITS



COLD FOIL

Cold foil it's the right application for high quality labels. You can position it by rail on any color group.



Hot stamping unit inline able to reach high speeds. Equipped with foil saver for saving foil consumption, it is also the ideal solution for creasing and quality label embossing.



High performance, flat screen unit inline. Designed as an alternative to off-line printing processes, it enables the production of quality labels in a single process.

ROTARY SCREEN PRINTING UNIT

Unit for unique effects in label printing.

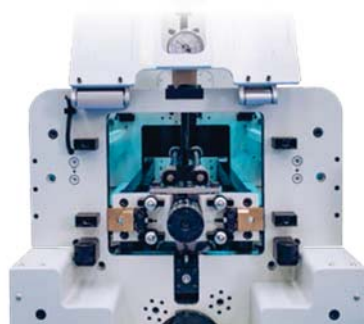


DIECUT UNITS



ROTARY DIECUT

A unit that allows the diecutting of any label shape insertion with crane.

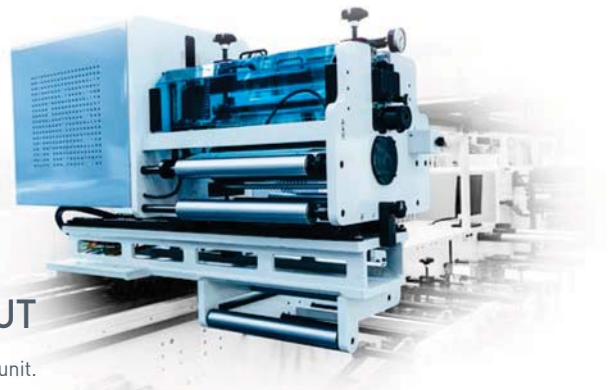


EASY CHANGE ROTARY DIE CUT

Drawer quick loading/unloading system



Semi rotary die cutting station.
Low-speed / high-speed



RAILWAY DIECUT

Moveable diecutter unit.



SHEETER

Sheet Output Unit (A4) alternatively with tape for output of shaped labels.

UNWINDER UNITS



DOUBLE SIDE
SUPPORT



SINGLE SIDE
BIG FORMATS



SINGLE SIDE

PRINT UNITS



INVICTA i1

FLEXO UNIT



SYNCHROLINE

FLEXO UNIT

INVICTA i2

FLEXO UNIT



lombardi
CONVERTING MACHINERY

Lombardi Converting
Machinery S.p.A.
Via del Mella 61/63
25020 Brescia (Italy)
Fax +39 030 3580644

Tel. +39 030 3580531
lombardi@lombardi.it
sales@lombardi.it
info@lombardi.it
www.lombardi.it

MARKETED & SERVICED BY
VINSAK
WWW.VINSAK.COM